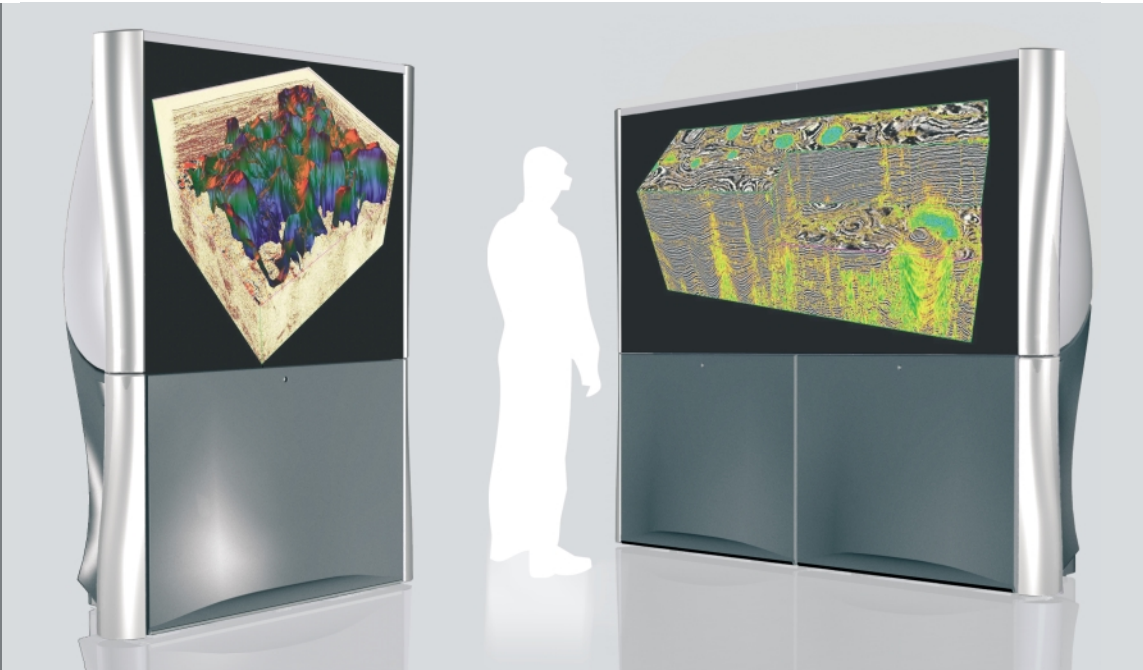


PRELIMINARY

Barco TRACE



Team Room Application Collaborative Environment

- Plug & Play Virtual Environment
- Team room Collaboration
- High-end functionality, Scalable
- 3D Active Stereo. Built-in Barco GALAXY WARP™ 3 chip DLP™ projector
- No room modifications or build-out

Applications

- Oil & Gas Exploration & Production
- Engineering design
- Video Conferencing, Real-Time Collaboration
- Immersive Training and Simulation
- Any application requiring the visualization of complex data sets or vast amounts of information

The Barco TRACE offers the most advanced state-of-the-art technology available today for team collaboration to visualize, analyze and explore complex data.

Today more and more companies want to visualize their **complex data in a collaborative manner**. Usually small teams from the same or from different departments gather in conference rooms or high-end visualization rooms to share information and evaluate data.

With the Barco TRACE, Barco offers a revolutionary tool that will not only have the **functionality of high-end visualization rooms**, but will also **fit through a normal door opening** without requiring any room modifications or build-out. It will enable teams to visualize data in a well-lit room, allowing for better eye-to-eye collaboration. **Active 3D stereo display** enhances intuitive understanding and accurate analysis of the complex data. Real time interaction with the data leads to quick team decision-making. In addition, the Barco TRACE is scalable from a **one channel to multi-channel configuration**. Options such as complex source switching with touch panel, and tracking can be added.

The Barco TRACE provides a virtual reality environment that has high-end functionality, is compact, transportable and scalable.

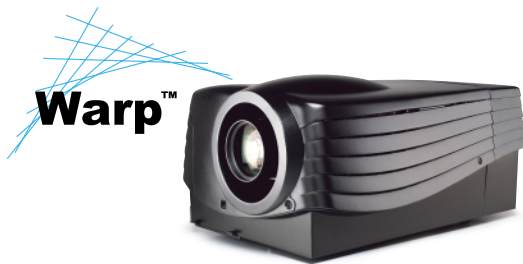
BARCO

Visibly yours

Features and specifications

TRACE is driven by Barco GALAXY WARP™ stereo DLP™ projectors

- Unparalleled GALAXY image quality
- 3,000 ANSI lumens for bright image, even in high ambient light conditions
- 800:1 contrast ratio delivers high contrast, proven image quality
- Bi-cubic WARP™ geometric distortion provides optimal edge-matching and geometric accuracy
- 205 MHz input bandwidth ensures versatility, compatibility with multiple display sources
- 1280 x 1024 pixel native resolution per channel for sharp details, ability to view massive amounts of data and excellent text readability from edge-to-edge. A patented pixel map processor enhances compatibility to source resolutions of up to 2,000 x 1,280 pixels.



Optimized for Collaborative Immersive Visualization

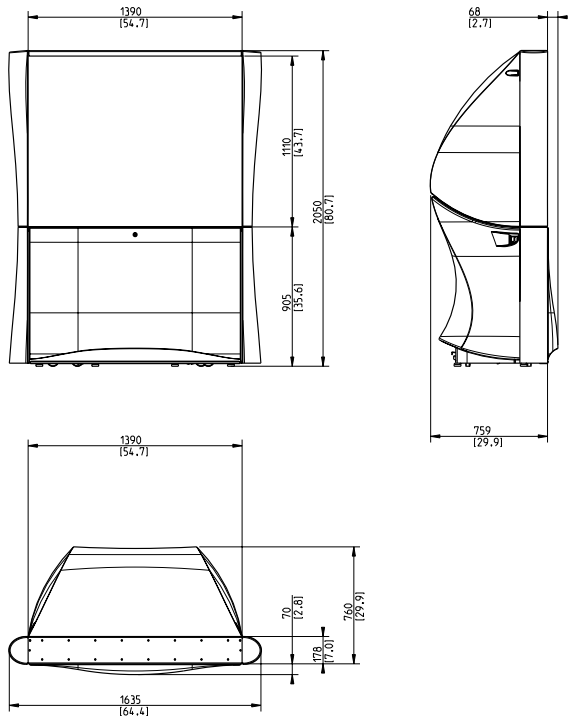
- 67 inch diagonal Screen Display. Black tinted high contrast screen offering a wide viewing angle.
- Active 3D Stereoscopic Display
- Scalable to multi-channel
- ISO 9001 manufacturing, extreme Reliability
- 3D Viewing glasses and emitters included

Complete solution for team collaboration, analysis and decision

- Integrated hardware installation and maintenance
- Custom software development available
- Optional touch panel automation system provides simple user interface
- Optional matrix switcher and separate video switcher for multiple input sources
- Optional Barco VIEWSCAPE video windowing system overlays multiple video/data windows on top of main display
- Rugged design for long lifetime
- * Optional video conferencing

Specifications (per channel):

- AC power: 110V (tolerance 100V - 255V)
- Power consumption: 1200 Watts
- Heat dissipation: 4100 BTU/Hr
- Weight: 180 kg / 396 lbs
- Dimensions in mm/(inches):



Ref.no. R599713 September 2003



Barco Simulation is an ISO 9001 registered company. The information and data given are typical for the equipment described. However any individual item is subject to change without any notice. The latest version of this product sheet can be found on www.vr.barco.com.

DLP is a trademark of Texas Instruments. Other, non-Barco product names appearing in this brochure are trademarks/registered trademarks of their respective owners.

Barco Simulation

US Headquarters:

600 Bellbrook Avenue - Xenia, OH 45385-4053
Tel. +1 (937) 372-7579 • Fax +1 (937) 372-8645
email: eis@barco.com

European Headquarters:

Noordlaan 5, B8520 Kuurne - Belgium
Tel. +32 56 36 82 11 • Fax +32 56 36 86 51
email: info.simulation@barco.com

BARCO

Visibly yours